

**Series: Stubby Antenna**

**Description:** 4G Pentaband 698-960 ;  
1710-2690MHz, Right angle

**PART NUMBER: W1900/W1902**



### Features:

- Small form factor monopole
- Antenna size W x L x H  
W1900/W1902 (18.4 x 8.0 x 49.5mm)
- Lead free materials
- RoHS Compliant Product
- Connector Type:  
W1900 SMA (male)  
W1902 RP-SMA (male)

### Applications:

- Penta band EU/US GSM/WCDMA
- Frequency range:  
698-960;1710-2690MHz
- M2M Applications

All dimensions are in mm

Issue: 2530

In the effort to improve our products, we reserve the right to make changes judged to be necessary.

CONFIDENTIAL AND PROPRIETARY INFORMATION

This document contains confidential and proprietary information of Pulse Electronics, Inc. (Pulse) and is protected by copyright, trade secret and other state and federal laws. Its receipt or possession does not convey any rights to reproduce, disclose its contents, or to manufacture, use or sell anything it may describe. Reproduction, disclosure or use without specific written authorization of Pulse is strictly forbidden.

For more information:

Pulse Worldwide Headquarters  
15255 Innovation Drive #100  
San Diego, CA 92128  
USA  
Tel: 1-858-674-8100

Pulse/Larsen Antennas  
18110 SE 34<sup>th</sup> St Bldg 2 Suite 250  
Vancouver, WA 98683  
USA  
Tel: 1-360-944-7551

Europe Headquarters  
Pulse GmbH & Co, KG  
Zeppelinstrasse 15  
Herrenberg, Germany  
Tel: 49 7032 7806 0

Pulse (Suzhou) Wireless Products Co, Inc.  
99 Huo Ju Road(#29 Bldg, 4<sup>th</sup> Phase  
Suzhou New District  
Jiangsu Province, Suzhou 215009 PR China  
Tel: 86 512 6807 9998



**Series: Stubby Antenna**

**Description:** 4G Pentaband 698-960 ;  
1710-2690MHz, Right angle  
**PART NUMBER: W1900/W1902**

## ELECTRICAL SPECIFICATIONS

Frequency	698-960MHz 1710-2690MHz
Nominal Impedance	50Ω
Return Loss	-2.5dB 698-820MHz -4dB 824-960MHz -10dB 1710-2690MHz
Peak Gain	1dBi 698-960MHz 4dBi 1710-2690MHz
Efficiency	52%
Radiation Pattern	Omni
Polarization:	Linear
Power withstanding	5W

Issue: 2530

In the effort to improve our products, we reserve the right to make changes judged to be necessary.

CONFIDENTIAL AND PROPRIETARY INFORMATION

This document contains confidential and proprietary information of Pulse Electronics, Inc. (Pulse) and is protected by copyright, trade secret and other state and federal laws. Its receipt or possession does not convey any rights to reproduce, disclose its contents, or to manufacture, use or sell anything it may describe. Reproduction, disclosure or use without specific written authorization of Pulse is strictly forbidden.

For more information:

Pulse Worldwide Headquarters  
15255 Innovation Drive #100  
San Diego, CA 92128  
USA  
Tel: 1-858-674-8100

Pulse/Larsen Antennas  
18110 SE 34<sup>th</sup> St Bldg 2 Suite 250  
Vancouver, WA 98683  
USA  
Tel: 1-360-944-7551

Europe Headquarters  
Pulse GmbH & Do, KG  
Zeppelinstrasse 15  
Herrenberg, Germany  
Tel: 49 7032 7806 0

Pulse (Suzhou) Wireless Products Co, Inc.  
99 Huo Ju Road(#29 Bldg,4<sup>th</sup> Phase  
Suzhou New District  
Jiangsu Province, Suzhou 215009 PR China  
Tel: 86 512 6807 9998



**Series: Stubby Antenna****Description:** 4G Pentaband 698-960,  
1710-2690MHz, Right angle**PART NUMBER: W1900/W1902****MECHANICAL SPECIFICATIONS**

Weight	W1900/W1902 11.07g
Antenna Color / Material	Black
Connector type	W1900 SMA(Male) W1902 RP-SMA(Male)

**ENVIRONMENTAL SPECIFICATIONS**

Operating Temperature	-30/+75 ° C
Storage Temperature	-30/+75 ° C
Wind-loading	100km/h
Ingress Protection	IP52
RoHS Compliant	Yes

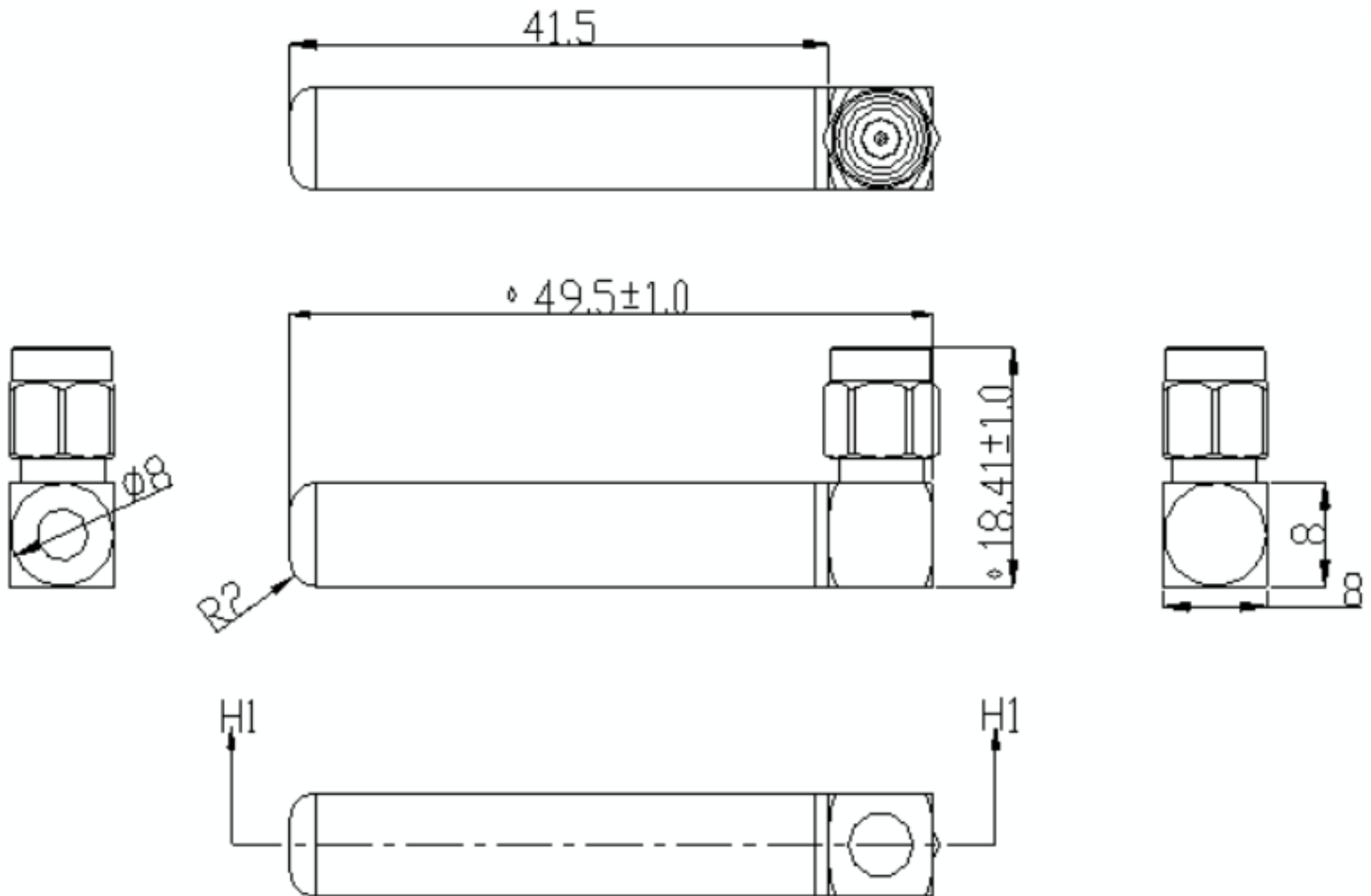
**Series: Stubby Antenna**

**Description:** 4G Pentaband 698-960,  
1710-2690MHz, Right angle

**PART NUMBER: W1900/W1902**

**MECHANICAL DRAWING**

W1900/W1902



Issue: 2530

In the effort to improve our products, we reserve the right to make changes judged to be necessary.

CONFIDENTIAL AND PROPRIETARY INFORMATION

This document contains confidential and proprietary information of Pulse Electronics, Inc. (Pulse) and is protected by copyright, trade secret and other state and federal laws. Its receipt or possession does not convey any rights to reproduce, disclose its contents, or to manufacture, use or sell anything it may describe. Reproduction, disclosure or use without specific written authorization of Pulse is strictly forbidden.

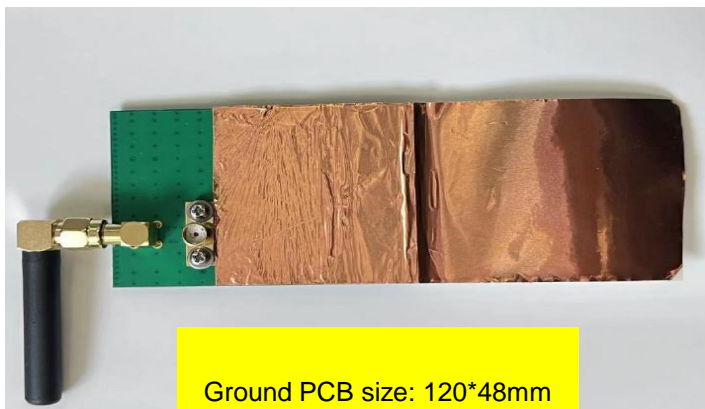
**Series: Stubby Antenna**

**Description:** 4G Pentaband 698-960,  
1710-2690MHz, Right angle

**PART NUMBER: W1900/W1902**

### CHARTS

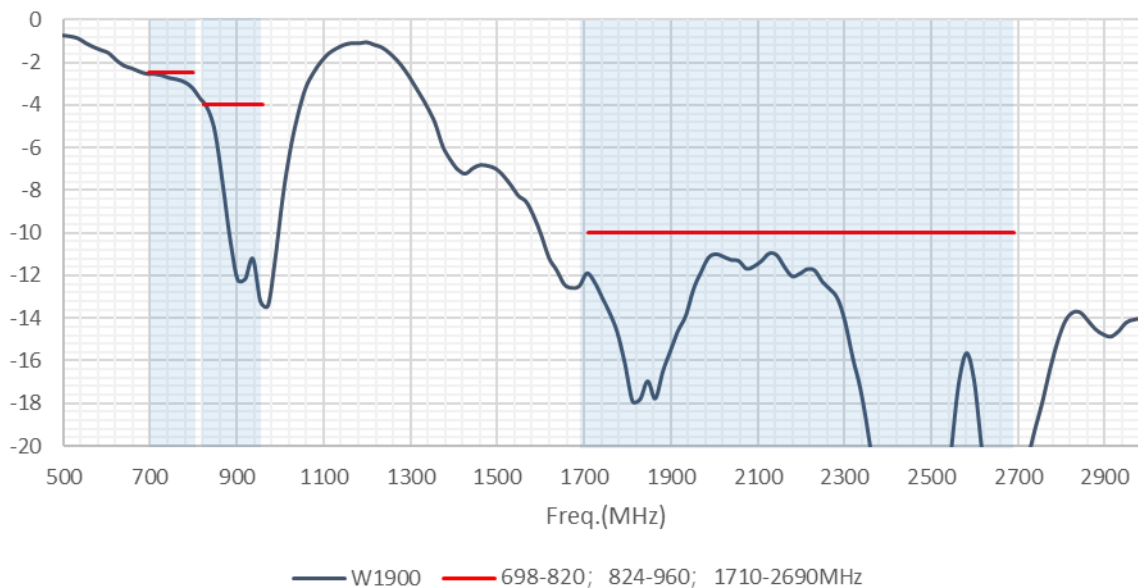
#### Test setup



#### Return loss

##### Return loss vs Frequency

Measured in Pulse Chamber 20250725



Issue: 2530

In the effort to improve our products, we reserve the right to make changes judged to be necessary.

CONFIDENTIAL AND PROPRIETARY INFORMATION

This document contains confidential and proprietary information of Pulse Electronics, Inc. (Pulse) and is protected by copyright, trade secret and other state and federal laws. Its receipt or possession does not convey any rights to reproduce, disclose its contents, or to manufacture, use or sell anything it may describe. Reproduction, disclosure or use without specific written authorization of Pulse is strictly forbidden.

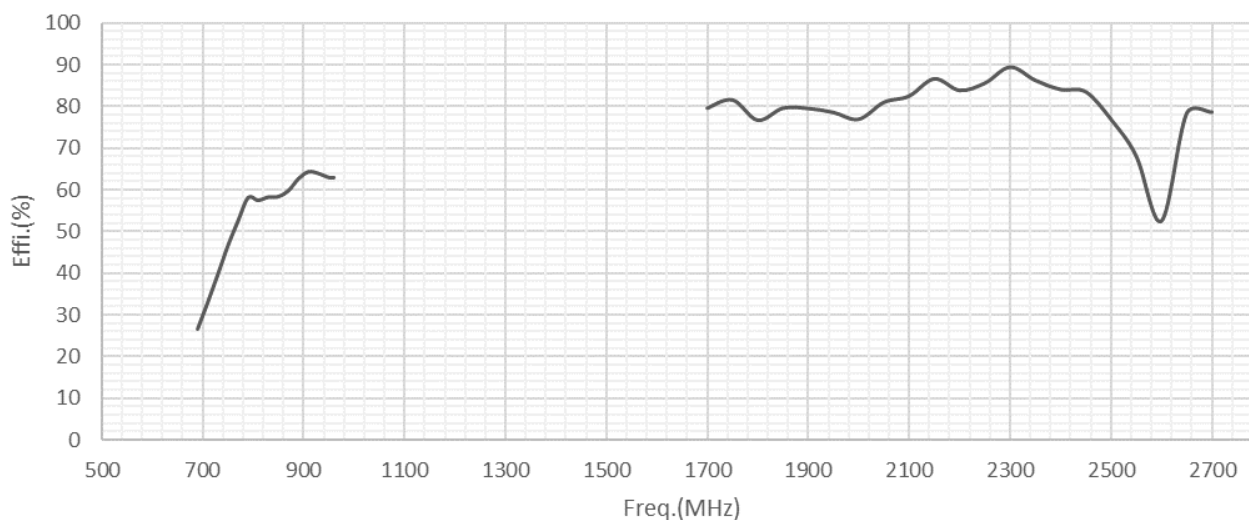
**Series: Stubby Antenna**

**Description:** 4G Pentaband 698-960,  
1710-2690MHz, Right angle

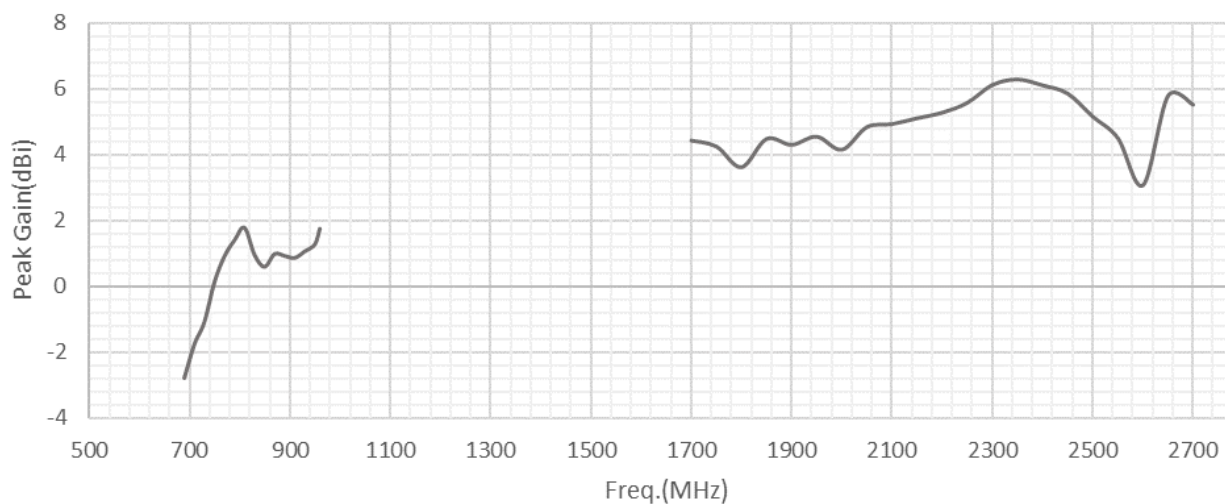
**PART NUMBER:** W1900/W1902

### CHARTS

Efficiency vs Frequency  
Measured in Pulse Chamber 20250725



Peak Gain vs Frequency  
Measured in Pulse Chamber 20250725



Issue: 2530

In the effort to improve our products, we reserve the right to make changes judged to be necessary.

CONFIDENTIAL AND PROPRIETARY INFORMATION

This document contains confidential and proprietary information of Pulse Electronics, Inc. (Pulse) and is protected by copyright, trade secret and other state and federal laws. Its receipt or possession does not convey any rights to reproduce, disclose its contents, or to manufacture, use or sell anything it may describe. Reproduction, disclosure or use without specific written authorization of Pulse is strictly forbidden.

Series: Stubby Antenna

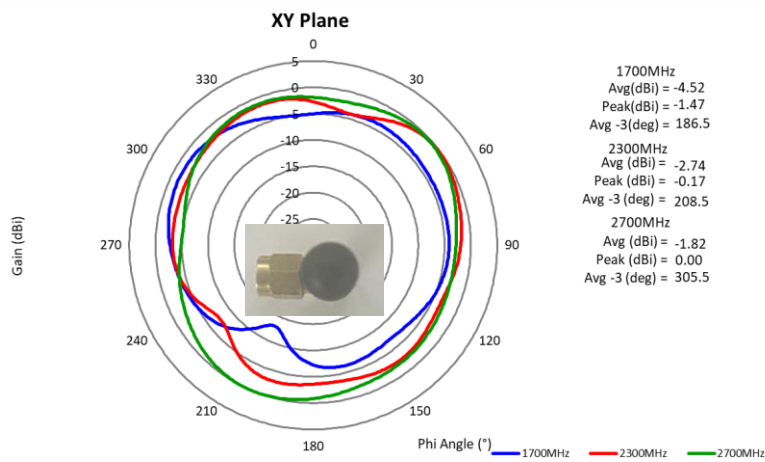
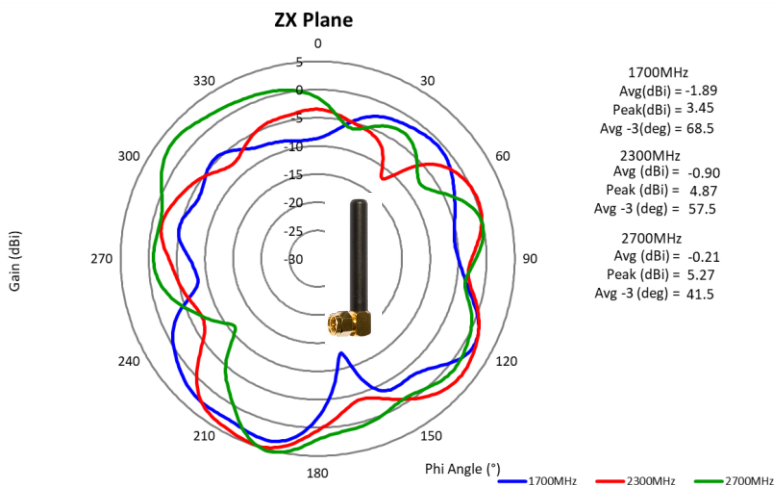
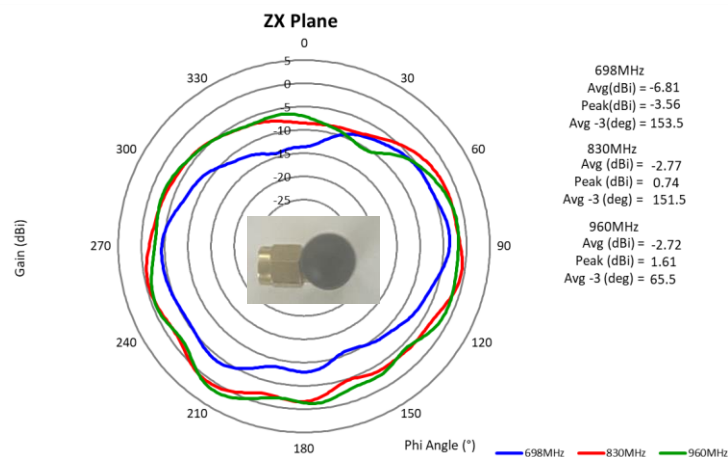
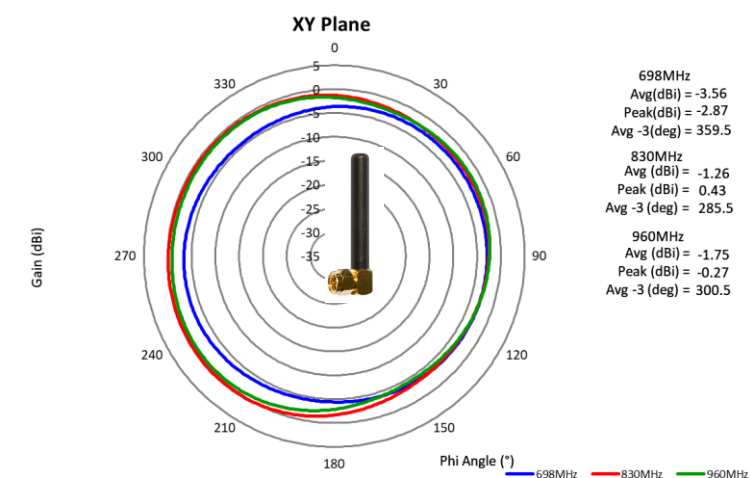
**Description:** 4G Pentaband 698-960,  
1710-2690MHz, Right angle  
**PART NUMBER:** W1900/W1902

### CHARTS

#### Free Space Radiation Pattern

##### Elevation Plane

##### Horizontal Plane



Issue: 2530

In the effort to improve our products, we reserve the right to make changes judged to be necessary.

CONFIDENTIAL AND PROPRIETARY INFORMATION

This document contains confidential and proprietary information of Pulse Electronics, Inc. (Pulse) and is protected by copyright, trade secret and other state and federal laws. Its receipt or possession does not convey any rights to reproduce, disclose its contents, or to manufacture, use or sell anything it may describe. Reproduction, disclosure or use without specific written authorization of Pulse is strictly forbidden.



**Series: Stubby Antenna**

**Description:** 4G Pentaband 698-960,  
1710-2690MHz, Right angle

**PART NUMBER: W1900/W1902**

## PACKAGING

1pcs antenna per PE bag

18pcs PE bags per tray

14pcs trays per package box ( 2pcs empty tray)

216pcs per package box

Package box: 460mm\*235mm\*140mm