

DKJ 10-25/35-50/50-70/70-95 Welding Machine Quick Fitting Connector



Features:

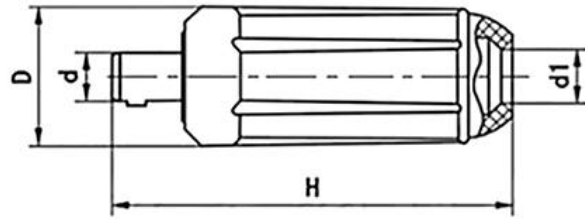
- Application: It is designed for electric welding machine output power supply connection.
- High quality: Made of brass and rubber, featuring excellent electrical conductivity and good insulation, impact resistance and high temperature resistance.

Specifications:

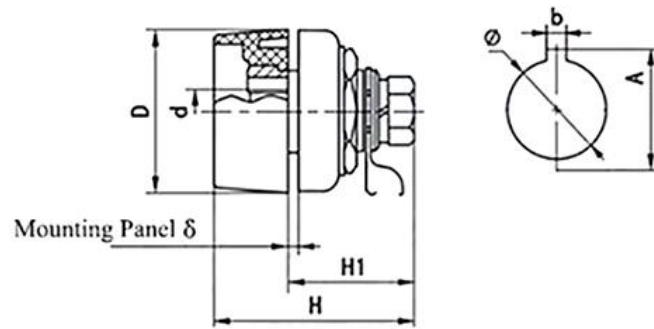
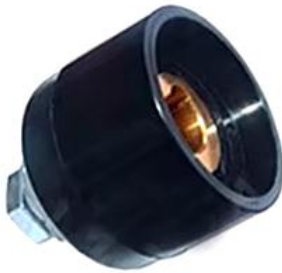
- Model Number : DKJ 10-25 35-50 50-70 70-95
- Welding Type : MMA, Tig cable suitable
- Welding Capacity : Rapid Fitting Welding Cable
- Color : Black, Red for Option
- Cover Material : Rubber
- Connector Material : Copper

Description:

- It is the EU style Welding Cable Rapid Fitting Connector.



Model	Rated Current	Wire Section (mm ²)	d	D	d1	H1	H
DKJ10-25	200A	10-25	9	26	11	75	85
DKJ35-50	315A	35-50	13	34.5	12.5	90	109
DKJ50-70	400A	50-70	13	38	18.5	91.5	110.5
DKJ70-95	500A	70-95	13	40.5	16.5	96	115



Model	Rated Current	Wire Section (mm ²)	d	D	H	H1	δ	D	Mounting Size(mm)		
									b	A	φ
DKJ10-25	200A	10-25	9	32.4	37.3	33.3	1-1.5	32.5	6	22.2	19.3
DKJ35-50	315A	35-50	13	40	52	39	1-4	38	6	32.8	30
DKJ50-70	400A	50-70	13	49	58	34.3	1-4	40	6	33	30
DKJ70-95	500A	70-95	13	50	59	35.3	1-4	43	6	32.7	30

Plug/Male



DKJ70-95



DKJ50-70



DKJ35-50



DKJ10-25



107.3g



73g



68.5g



24g

Socket/Female



BRASS
High hardness
High electrical conductivity

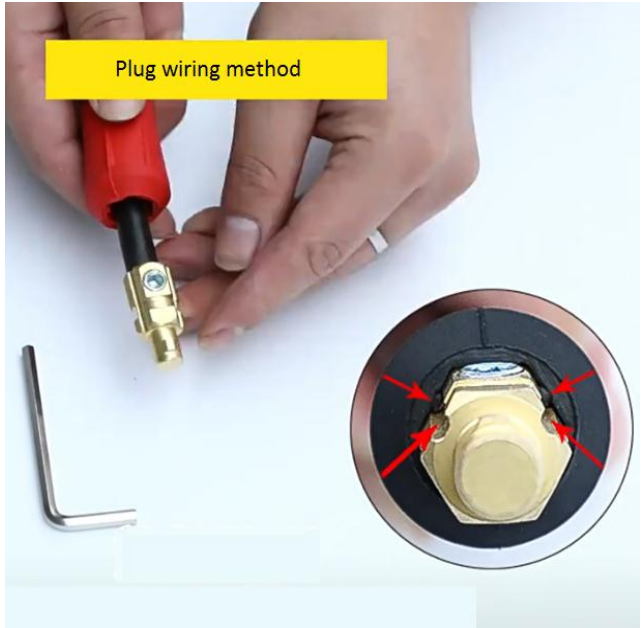
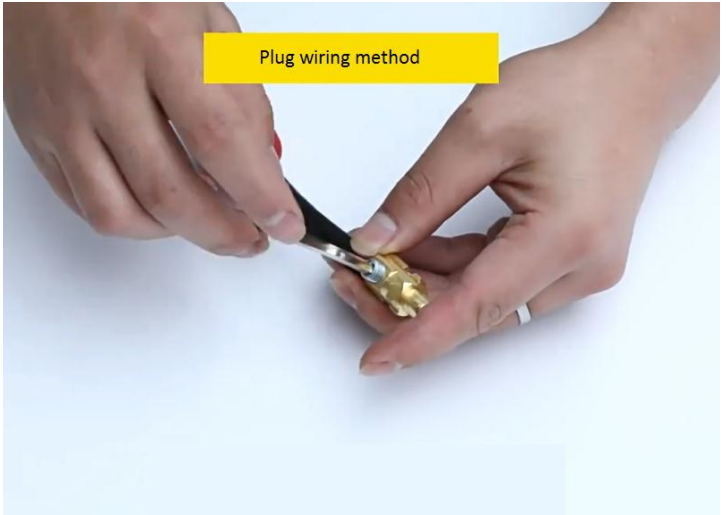
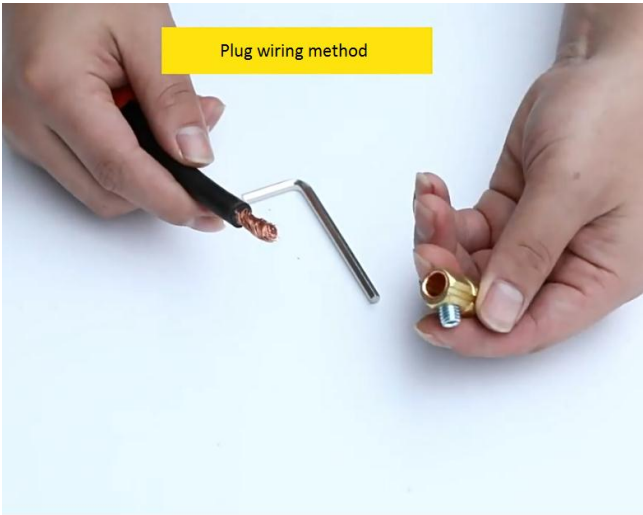
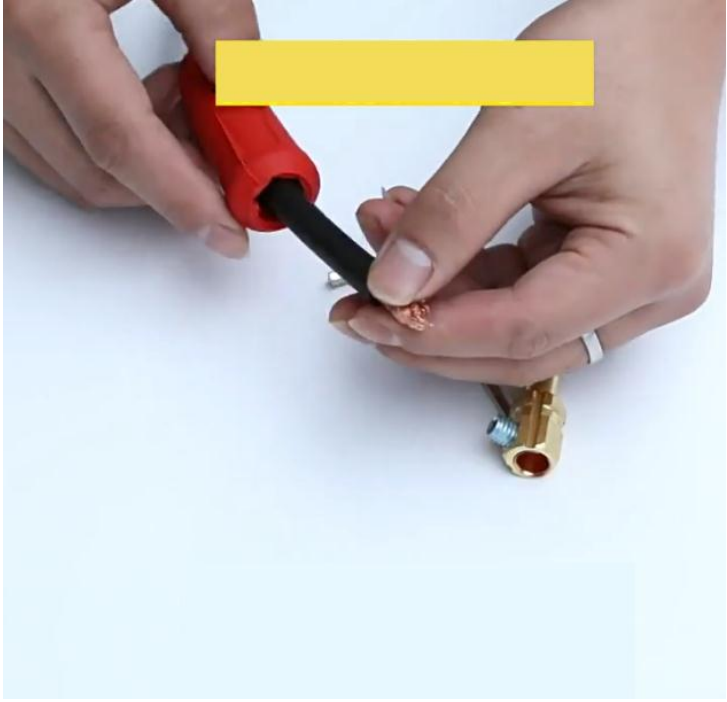
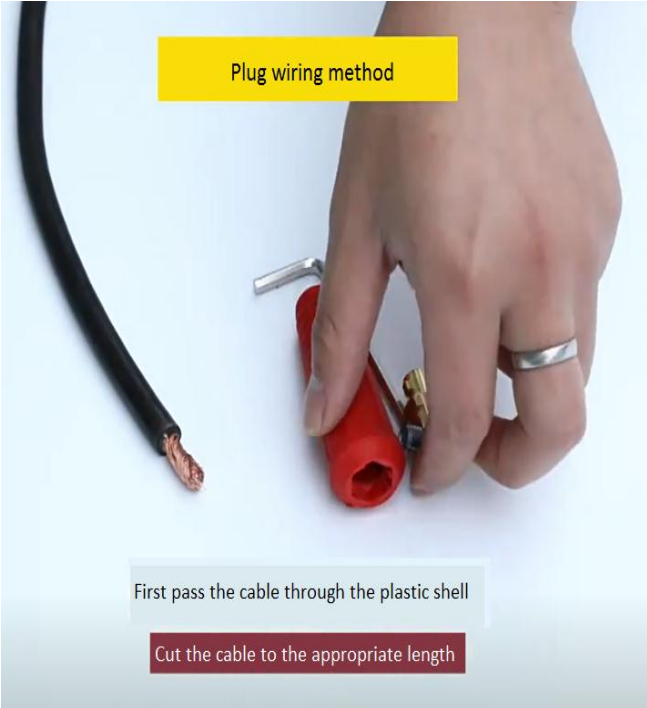


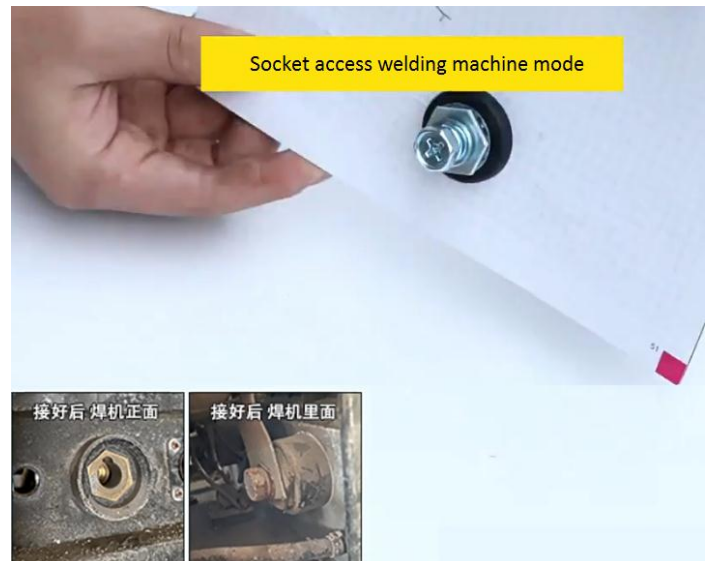
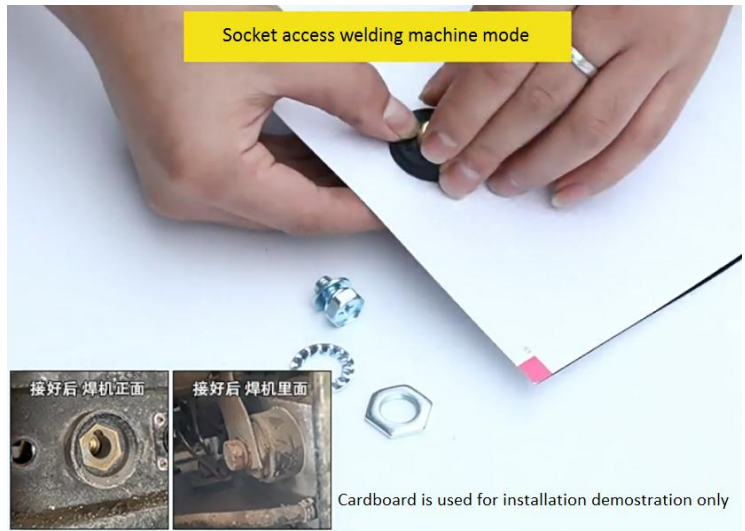
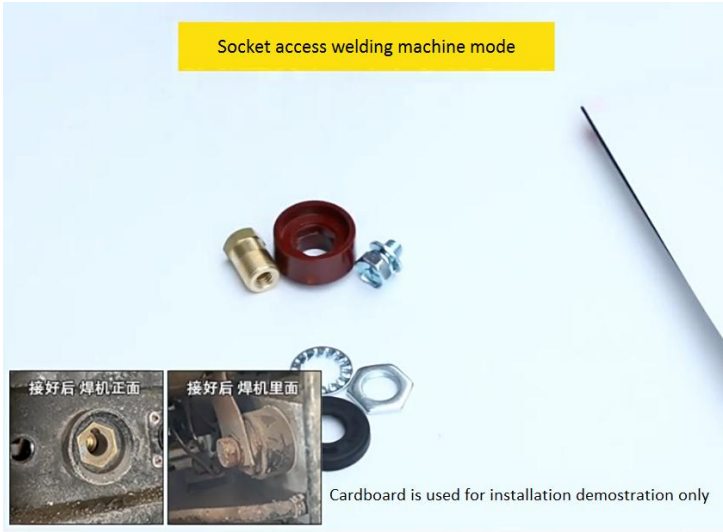
RUBBER
High Insulation
High temperature



BAKELITE
High Insulation
Moisture-proof, anti-fall, anti-corrosion







Socket access welding machine mode



Cardboard is used for installation demonstration only